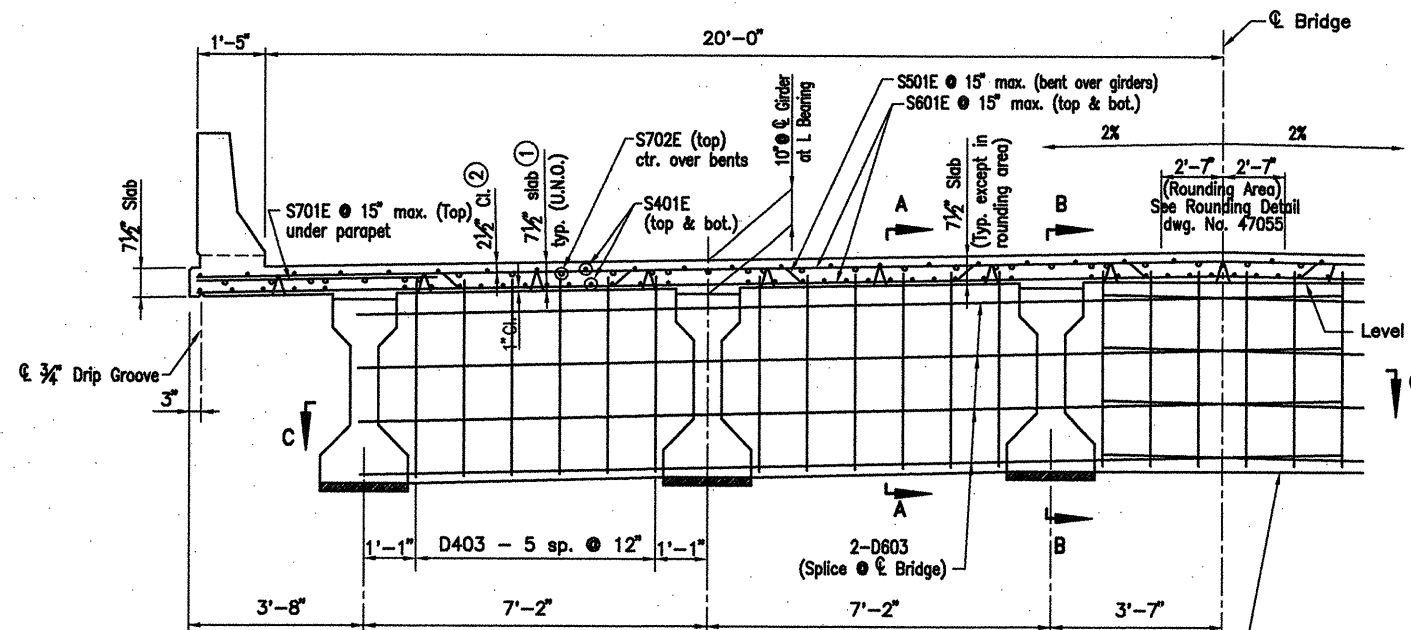
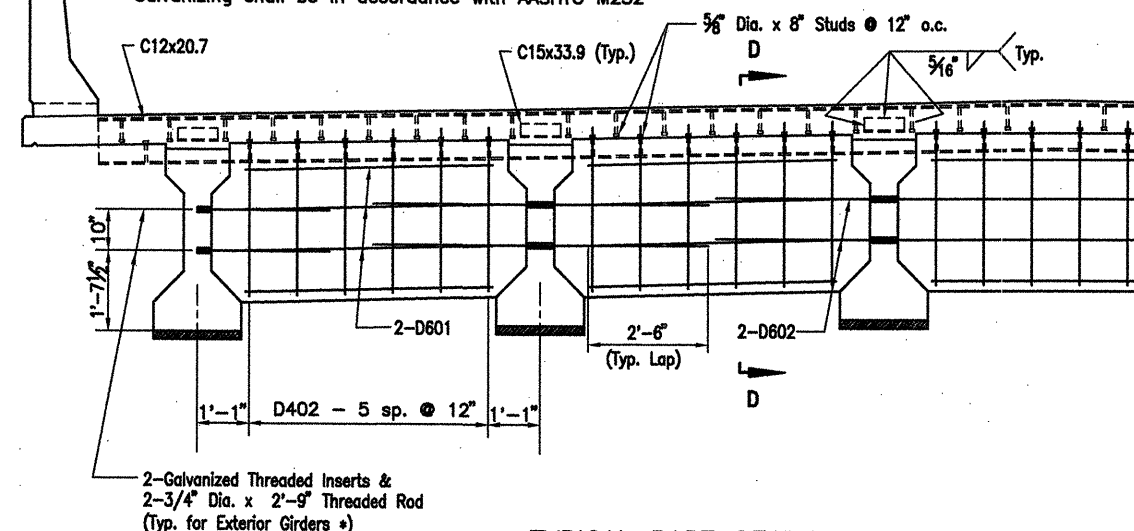


DATE REVISED	DATE FILMED	DATE REVISED	DATE FILMED	FED. ROAD NO.	STATE	FED. AID PROJ. NO.	SHEET NO.	TOTAL SHEETS
					ARK.			
				JOB NO.		110395	58	203
				06830		308' UNIT		47056



* Galvanized Threaded Inserts & 3/4" Dia. Threaded Rods to be AASHTO M270, Gr. 36. (Non-Pay Item subsidiary to the item 'Prestressed Concrete Girders'. Galvanizing shall be in accordance with AASHTO M232

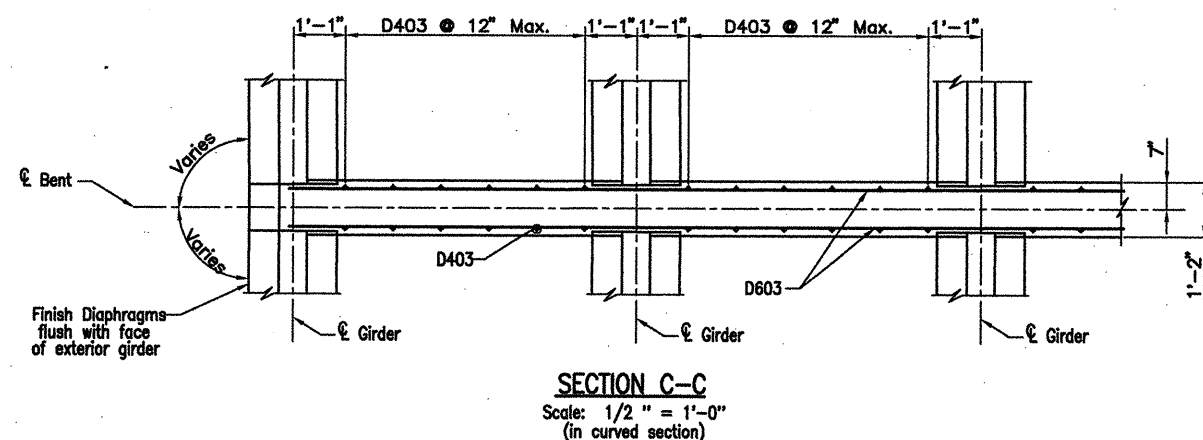


TYPICAL PART SECTION
AT END DIAPHRAGM BETWEEN ENDS OF GIRDERS
AT EXPANSION JOINT
Scale: 1/2" = 1'-0"

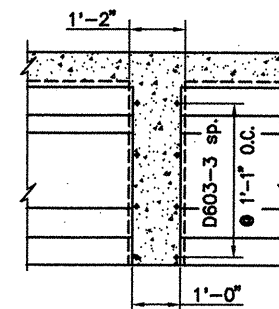
- ① Tolerance: Minus: 1/4"
Plus: 1/2"
- ② Tolerance: Minus: 1/4"
Plus: Equal to amount of slab thickening used to meet slab thickness tolerance

TYPICAL PART SECTION
AT CONTINUOUS DIAPHRAGM BETWEEN ENDS OF GIRDERS
AT FIXED JOINT
Scale: 1/2" = 1'-0"

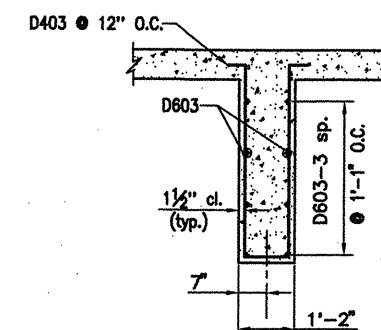
Place Styrofoam or other removable material to form under side of diaphragm. Removable material shall be considered subsidiary to Class S(AE) Concrete.



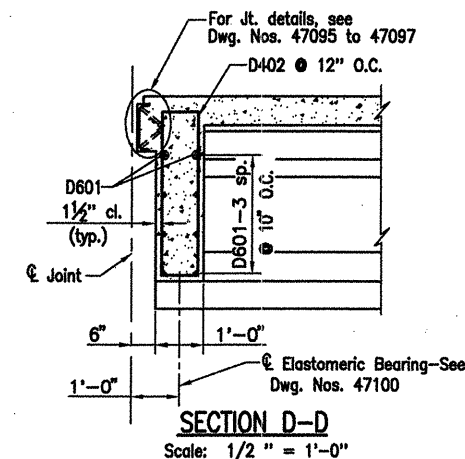
SECTION C-C
Scale: 1/2" = 1'-0"
(in curved section)



SECTION B-B
Scale: 1/2" = 1'-0"



SECTION A-A
Scale: 1/2" = 1'-0"



SECTION D-D
Scale: 1/2" = 1'-0"

Note:
The Superstructure details shown are for use when removable deck forming is used and are the basis for measurement of Class S(AE) Concrete. See Standard Drwg. No. 14991 for allowable modifications and for tolerances when Permanent Deck Forming is used.

SLAB REINFORCING

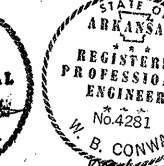
Transverse: S501E @ 15" o.c. max. bent up over girders
S601E @ 15" o.c. max. in top and bottom
S701E @ 15" o.c. max. in top at parapet

Longitudinal: S401E in top and bottom (Placed as shown)

PARAPET REINFORCING

For placing of parapet reinforcing see dwg. 47060.

Note: Class I Protective Surface Treatment shall be applied to the Roadway Surface and to the Face and Top of the Concrete Parapet Rail.



ALTERNATE NO. 1

DETAILS OF 308'-0" CONT.
PRESTRESSED CONCRETE GIRDER UNIT
(SHEET 5 OF 11)

WHITE RIVER STR. & APPRS.
(CLARENDON) (PH III) (F)
MONROE COUNTY

ROUTE 79 SEC. 13

ARKANSAS STATE HIGHWAY COMMISSION
LITTLE ROCK, ARK.

Engstrom/Modjeski and Masters, Inc.

DRAWN BY: YO DATE: Nov. 07 FILENAME: b11039511.s05
CHECKED BY: GPT DATE: Nov. 01 SCALE: 1/2" = 1'-0"
DESIGNED BY: YO DATE: Nov. 01
BRIDGE NO. 06830 DRAWING NO. 47056